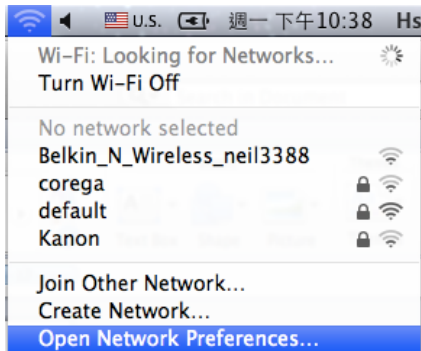


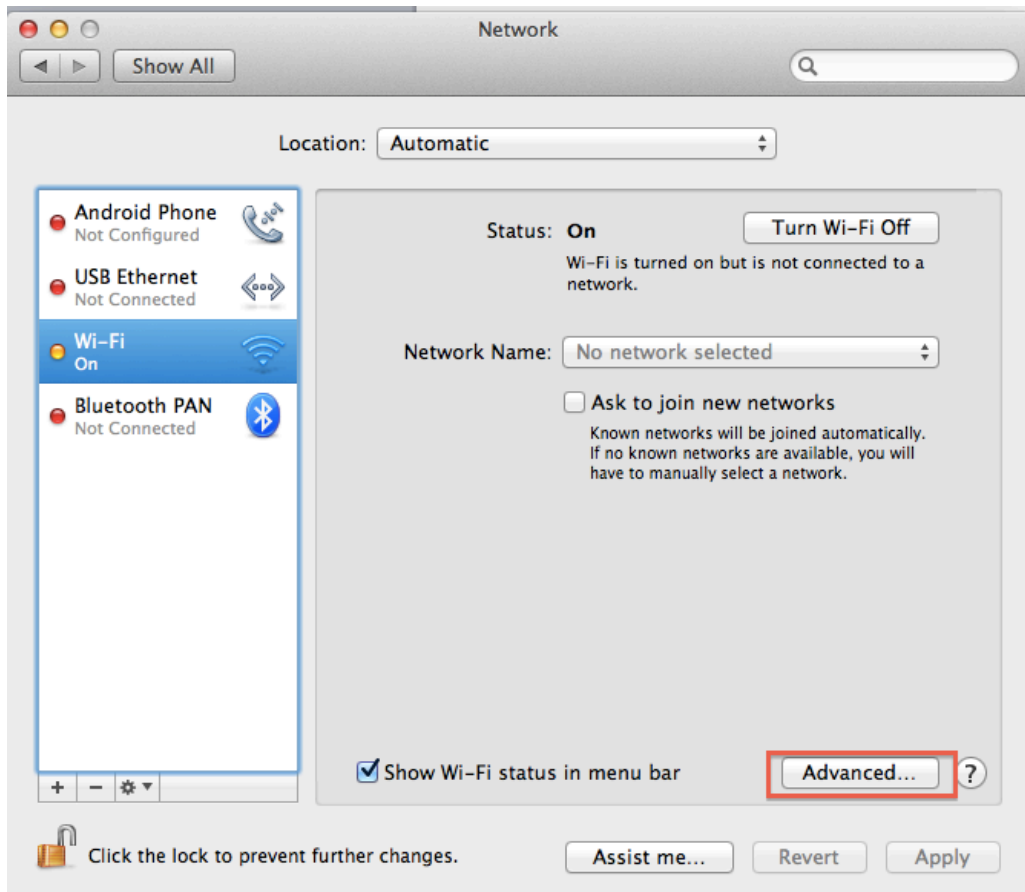
Use Async PowerPoint Remote to Connect the MAC through Wi-Fi Directly

1. Create a Wifi Network on Your MAC

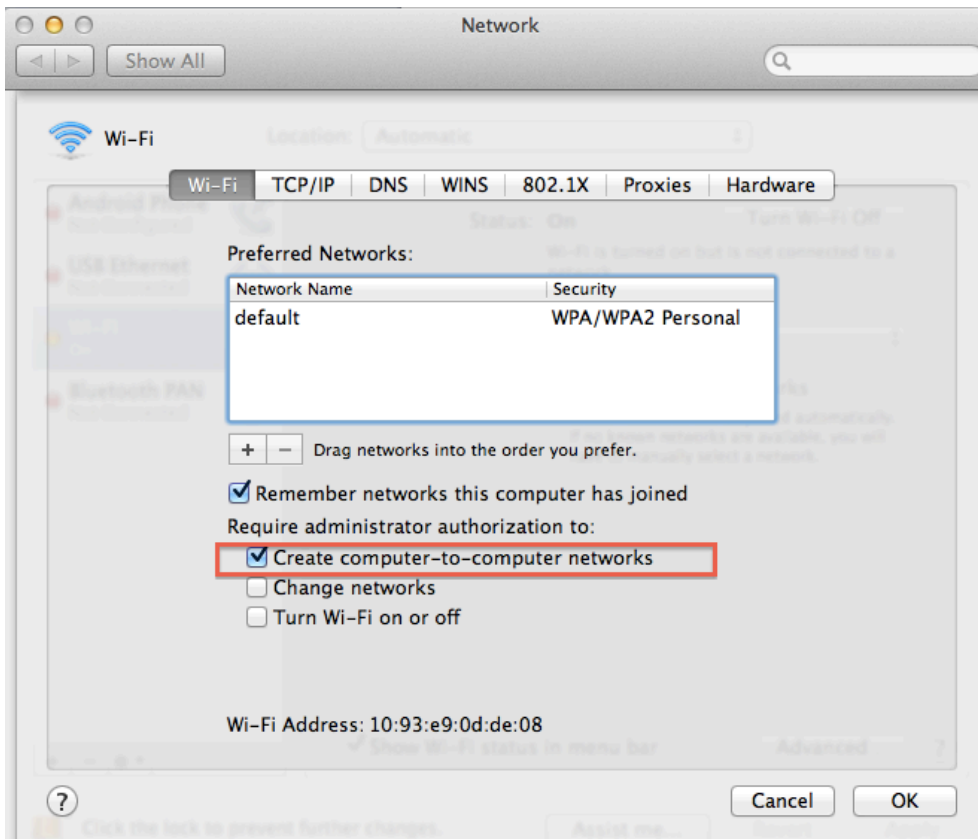
Select the Wireless Symbol on Your System Bar and Click the “Open Network Preferences”



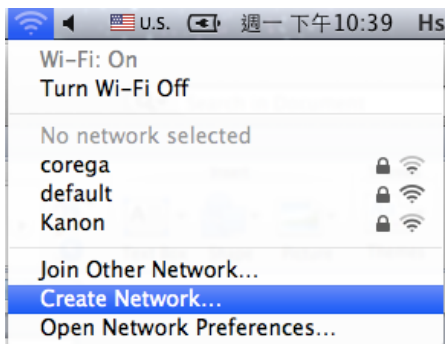
Click the “Advanced” Button



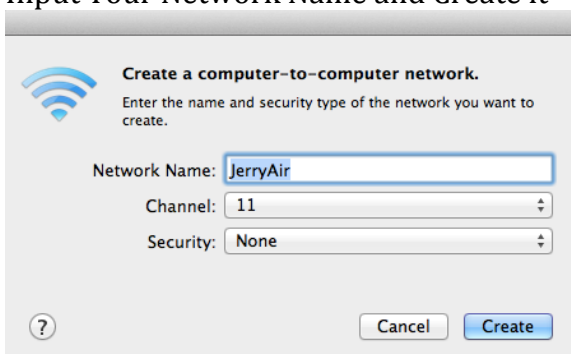
Click the “Create computer-to-computer networks” Button



Select the Wireless Symbol on Your System Bar and Click the “Create Network”



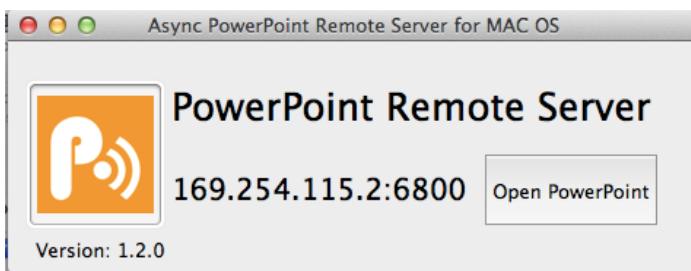
Input Your Network Name and Create it



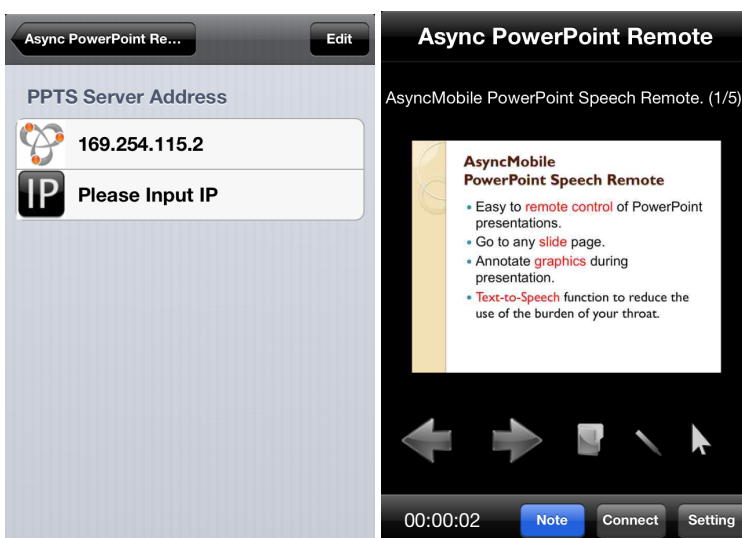
2. Go to Your iPhone Settings and set your Wi-Fi connection to connect the MAC machine



3. Download and Execute the PPTS Server.
Click the "Open PowerPoint" button to open a PowerPoint Slide



4. Use the Async PowerPoint Remote to control your PowerPoint Slide



Troubleshooting:

Disable Firewall

On a Mac:

- . Open up System Preferences, which is the icon in your dock with the gears (usually near the far right).
- . Click on "Security", which is in the top line of icons.
- . Go to the Firewall tab.
- . Click the small padlock icon in the bottom left-hand corner. Enter your password when prompted.
- . Hit the Stop button to turn the firewall off. If you want to turn it back on later, you can come right back to the same place and hit the Start button.